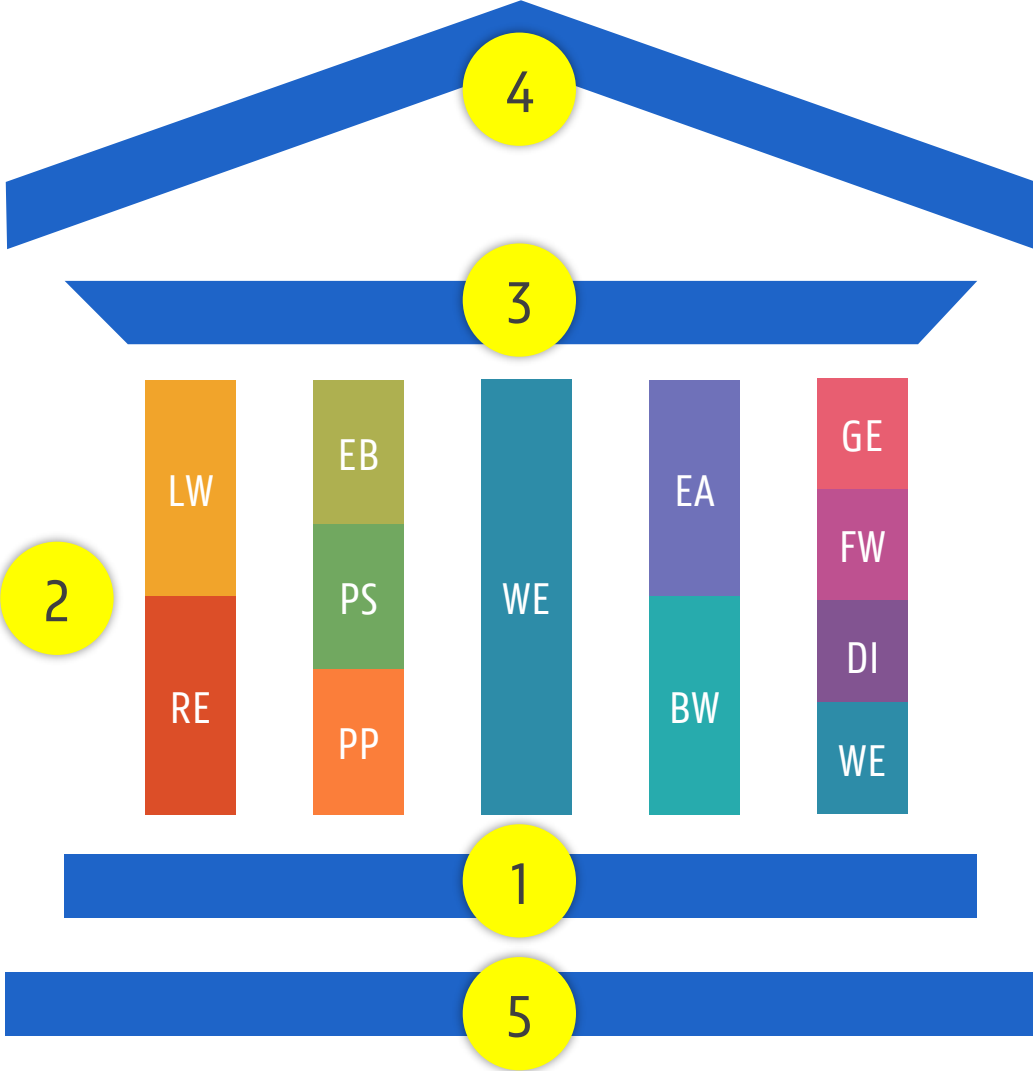




Get to know the structure and organization of the Doctoral Schools.

Click on the numbered markers to learn more.

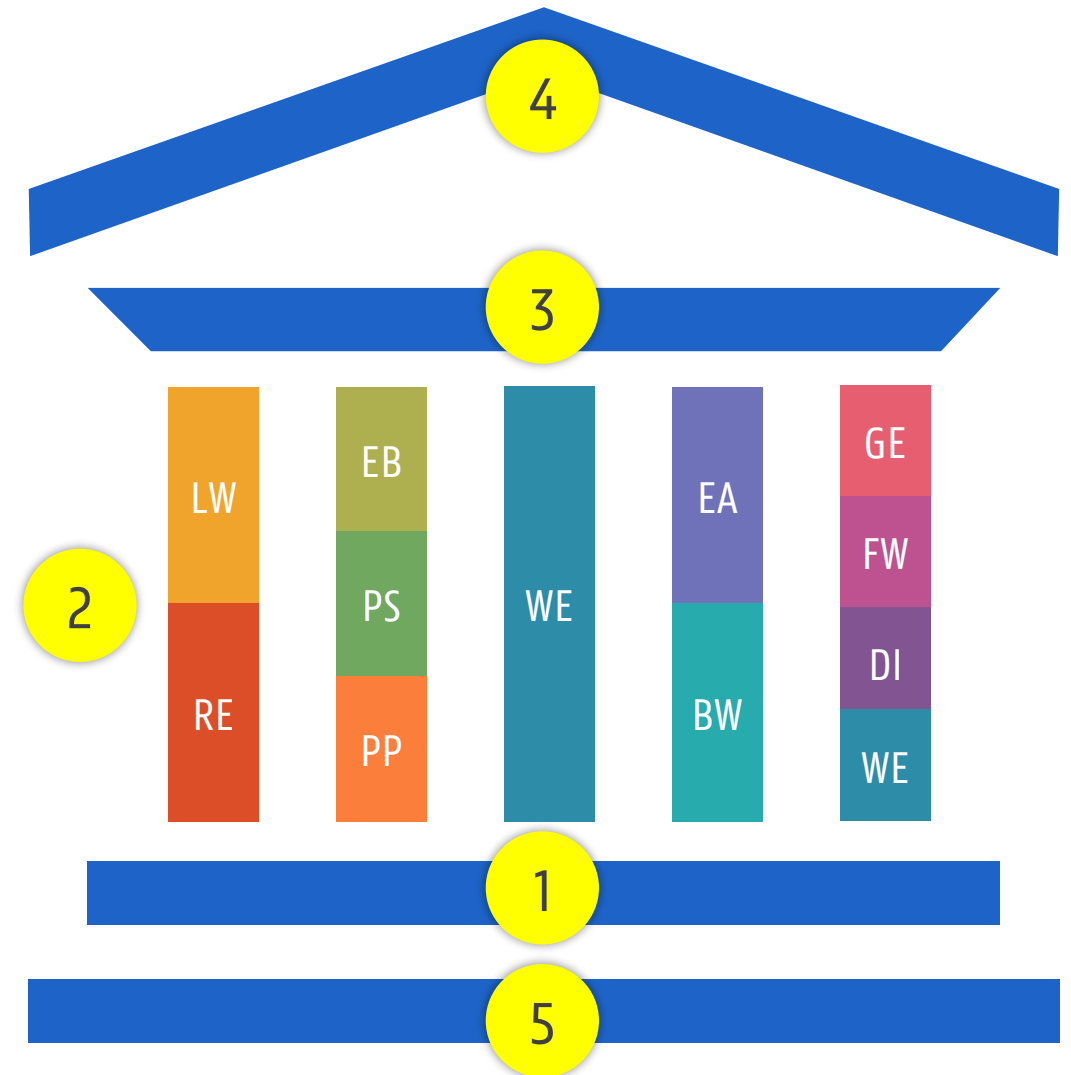


## 1. Doctoral Schools - structure

As a new PhD candidate, you automatically became a member of the Doctoral School of your choice.

There are 5 Doctoral Schools at Ghent University:

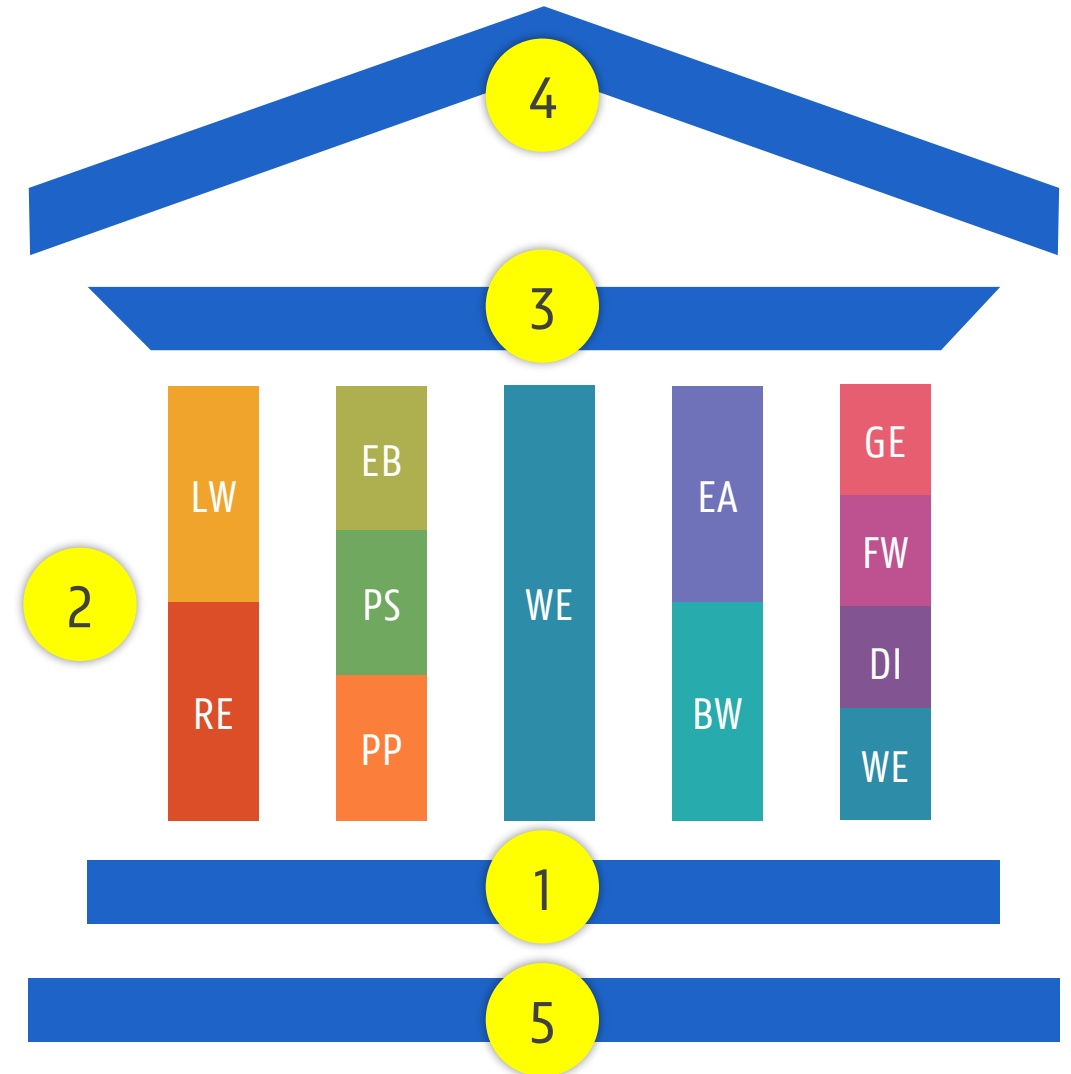
- **Arts, Humanities and Law (AHL):** Faculty of Arts and Philosophy (LW), and Faculty of Law and Criminology (RE)
- **Social and Behavioural Sciences (SBS):** Faculty of Economics and Business Administration (EB), Faculty of Political and Social Sciences (PS), and Faculty of Psychology and Educational Sciences (PP)
- **Natural Sciences (NS):** Faculty of Sciences (WE)
- **(Bioscience) Engineering (BSE):** Faculty of Engineering and Architecture (EA), and Faculty of Bioscience Engineering (BW)
- **Life Sciences and Medicine (LSM):** Faculty of Medicine and Health Sciences (GE), Faculty of Pharmaceutical Sciences (FW), and Faculty of Veterinary Medicine (DI)



## 2. Doctoral Schools - organization

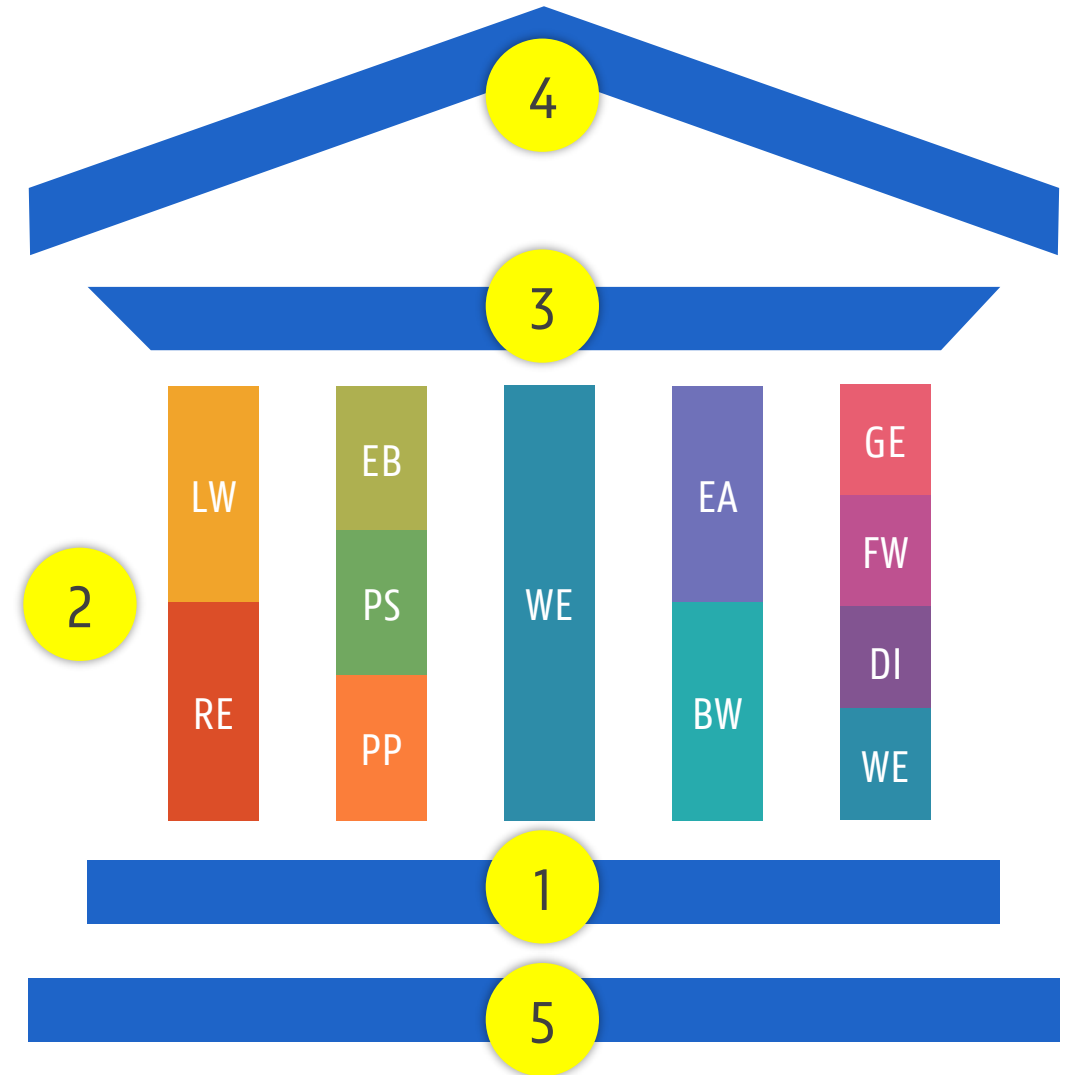
Each Doctoral School has an **associated council** which makes decisions about Doctoral School specific rules and policies, but also about which course applications will receive funding.

At the head of each Doctoral School is a **director** who is in charge of the day-to-day management. The director is also responsible for overseeing that the **Doctoral Advisory Committee (DAC)** assigned to you as a PhD candidate is functioning properly.



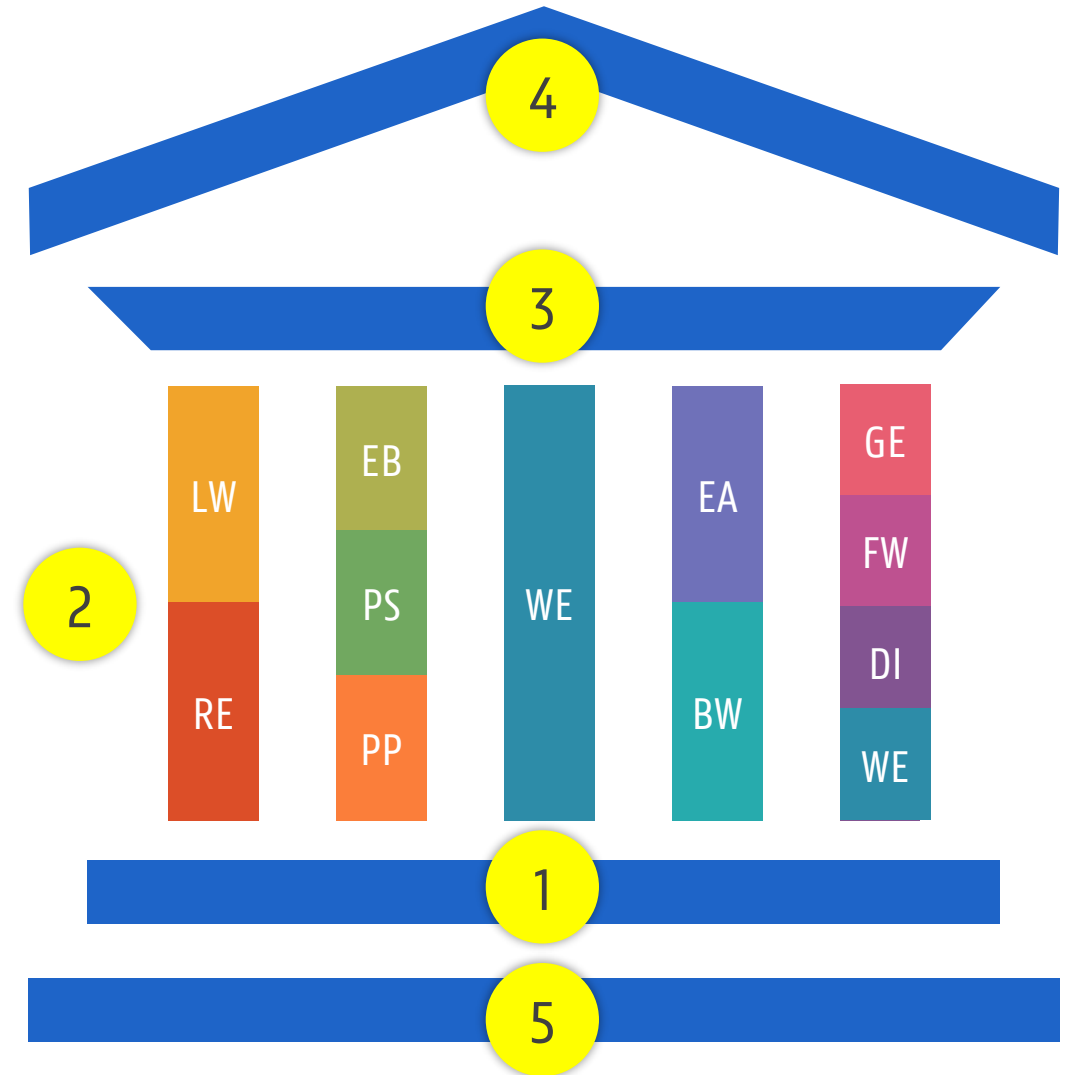
### 3. Board of Directors

Together, the directors of each Doctoral School make up the **Board of Directors** of the Doctoral Schools. This board implements the strategic objectives of the Doctoral Schools at Ghent University.



## 4. Doctoral Schools Steering Group

The Doctoral Schools Steering Group is the body that determines the Doctoral Schools's strategic priorities. It advises the faculties and the university's administration on matters of doctoral education, and it makes sure that the university's policies align with those at the regional, federal, and European level. The Doctoral Schools Steering Group is also in charge of allocating funds to each individual Doctoral School.



## 5. Doctoral Schools Office

The **Doctoral Schools Office** supports the Doctoral School structures, both at the level of policy and administration. It is the Doctoral Schools Office that makes sure that every PhD candidate

1) submits an annual progress report in a timely fashion

2) receives either a positive or a negative recommendation on that report from their promotor and (where applicable) from the Doctoral Advisory Committee

so that 3) they are able to re-enrol every year.

The Doctoral Schools Office also offers a helpdesk ([doctoralschools@UGent.be](mailto:doctoralschools@UGent.be), + 32 (0)9 264 98 65) that is available to help doctoral candidates who have questions about their doctoral training program, re-enrolment, and other administrative matters.

